

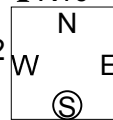
11

♠AQ97
♥A86
♦AKQ9
♣K10

♠8
♥9
♦10763
♣QJ86532

♠K1065432
♥K75
♦854
♣

♠J
♥QJ10432
♦J2
♣A974



♠8
♥9
♦10763
♣QJ86532

Board (11) Av: NS=+1000

N-S	E-W	Contract	L	N-S	E-W	IMP
1	7	6S	S 7 CA	1010		0
7	1	6S	S 7 CA	1010		0
2	24	6S	N 6 H9	980		-1
24	2	6S	S 7 CA	1010		0
3	17	6S	N 7 H5	1010		0
17	3	6S	S 7 CA	1010		0
4	10	5S	S 6 C7	480		-11
10	4	6S	S 7 CA	1010		0
5	15	6S	N 7 D2	1010		0
15	5	6S	S 7 CA	1010		0
6	11	7Cx	E-5 S4	1100		3
11	6	6S	S 7 CA	1010		0
8	19	6S	S 7 CA	1010		0
19	8	6S	S 7 H2	1010		0
9	13	6S	S 7 C3	1010		0
13	9	6S	S 7 CA	1010		0
12	16	6S	S 6 HQ	980		-1
16	12	6S	S 6 HQ	980		-1
14	22	6S	S 6 HQ	980		-1
22	14	6S	N 7 CA	1010		0
18	20	6NT	N 6 CQ	990		0
20	18	6S	S 7 CA	1010		0
21	23	6S	S 7 CA	1010		0
23	21	6S	N 7 CQ	1010		0

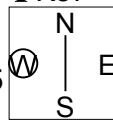
12

♠J72
♥Q987
♦QJ2
♣K87

♠K64
♥J65432
♦3
♣A95

♠A108
♥
♦AK64
♣QJ10642

♠Q953
♥AK10
♦109875
♣3



♠K64
♥J65432
♦3
♣A95

Board (12) Av: NS=+70

N-S	E-W	Contract	L	N-S	E-W	IMP
1	7	5Hx	E-2 DK	300		6
7	1	2C	S 5 DT	150		2
2	24	4C	S 4 HA	130		2
24	2	5C	S-1 HA		100	-5
3	17	5C	S 5 HK	600		11
17	3	3NT	N-2 H2		200	-7
4	10	5C	S-1 HA		100	-5
10	4	5C	S 5 HK	600		11
5	15	4C	N 4 H3	130		2
15	5	5C	S 5 HA	600		11
6	11	4C	S 4 HA	130		2
11	6	5Cx	S-1 HA		200	-7
8	19	4Hx	E-1 DK	100		1
19	8	3NT	N-2 D2		200	-7
9	13	5C	S-1 C2	100		-5
13	9	3NT	N-2 H4	200		-7
12	16	5C	S-1 HA	100		-5
16	12	4Hx	E-2 DA	300		6
14	22	4Hx	E-1 CQ	100		1
22	14	5C	N-1 HK		100	-5
18	20	3NT	N-2 H4		200	-7
20	18	3H	W-1 C7	50		-1
21	23	5C	S-1 D9		100	-5
23	21	4Hx	E-2 DA	300		6

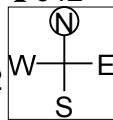
13

♠AQ652
♥J3
♦K73
♣642

♠J4
♥KQ94
♦864
♣KQ73

♠K1098
♥A65
♦A105
♣A095

♠73
♥10872
♦AQJ92
♣J8



♠J4
♥KQ94
♦864
♣KQ73

Board (13) Av: NS=+110

N-S	E-W	Contract	L	N-S	E-W	IMP
1	7	3S	S 3 H7	140		1
7	1	3S	N 3 D4	140		1
2	24	3S	N 3 HK	140		1
24	2	2S	S 4 HK	170		2
3	17	2S	N 3 HQ	140		1
17	3	4S	N-1 D8		100	-5
4	10	4S	N 4 D8	620		11
10	4	3S	N 3 HK	140		1
5	15	3S	N 3 HQ	140		1
15	5	4S	S-1 H7		100	-5
6	11	3S	N 3 D5	140		1
11	6	2S	S 3 H7	140		1
8	19	3S	S 3 D4	140		1
19	8	2S	N 4 D2	170		2
9	13	2S	N 3 HQ	140		1
13	9	3S	N 3 D4	140		1
12	16	2S	N 3 HK	140		1
16	12	4S	S-1 H6		100	-5
14	22	3S	N 3 HK	140		1
22	14	3D	E-1 C2	100		0
18	20	3S	N 3 D4	140		1
20	18	3S	N 3 D6	140		1
21	23	3S	N 3 D6	140		1
23	21	4S	S-1 H7		100	-5

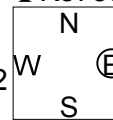
14

♠986
♥K83
♦A8
♣K8753

♠AK10
♥A9754
♦K3
♣Q64

♠Q42
♥QJ106
♦QJ109
♣A2

♠J753
♥2
♦76542
♣J109



♠AK10
♥A9754
♦K3
♣Q64

Board (14) Av: NS=+80

N-S	E-W	Contract	L	N-S	E-W	IMP
1	7	1NT	E-2 DQ	100		1
7	1	3NT	N 3 SA	400		8
2	24	1NT	E-2 DQ	100		1
24	2	1NT	E-1 DQ	50		-1
3	17	1H	E-3 S5	150		2
17	3	2S	E-1 DQ	50		-1
4	10	2S	E 2 HQ		110	-5
10	4	1NT	E-3 DQ	150		2
5	15	1NT	E-2 H3	100		1
15	5	3NT	N 3 H4	400		8
6	11	1NT	E-2 DQ	100		1
11	6	2H	E-2 DQ	100		1
8	19	2H	E-3 HJ	150		2
19	8	2S	W 2 D2		110	-5
9	13	1NT	E-1 DQ	50		-1
13	9	1NT	E-2 DJ	100		1
12	16	3D	E-3 DQ	150		2
16	12	2S	W 3 DQ		140	-6
14	22	2S	W-1 DA	50		-1
22	14	2C	N-1 HA		50	-4
18	20	1NT	E-2 DQ	100		1
20	18	1H	E-1 DQ	50		-1
21	23	1H	E-1 DQ	50		-1
23	21	3NT	N-1 H5		50	-4

15

♠ 5
♥ AK643
♦ K5
♣ KQ954

♠ J109842
♥ 9
♦ 732
♣ J108

♠ Q63
♥ QJ102
♦ A986
♣ 73

♠ AK7
♥ 875
♦ QJ104
♣ A62

N
W | E
S

16

♠ J652
♥ A6
♦ Q85
♣ Q854

♠ K83
♥ Q1084
♦ K76
♣ K107

♠ A
♥ KJ952
♦ A942
♣ J63

♠ Q10974
♥ 73
♦ J103
♣ A92

N
W | E
S

17

♠ AKQ2
♥ Q1072
♦ A4
♣ K53

♠ 7
♥ J985
♦ K52
♣ A10964

♠ 109864
♥ AK4
♦ 10973
♣ Q

♠ J53
♥ 63
♦ QJ86
♣ J872

N
W | E
S

18

♠ KQ84
♥ 973
♦ AK2
♣ 1072

♠ J2
♥ KQ102
♦ Q108
♣ AJ53

♠ A1073
♥ J8654
♦ 654
♣ 6

♠ 965
♥ A
♦ J973
♣ KQ984

N
W | E
S

Board (15) Av: NS=+330

N-S	E-W	Contract	L	N-S	E-W	IMP
1	7	5Hx	S-1 SJ		200	-11
7	1	4H	N 4 DA	620		7
2	24	5H	N-1 DA		100	-10
24	2	4H	N 4 S3	620		7
3	17	3NT	S 6 S5	690		8
17	3	4H	N 4 S3	620		7
4	10	5H	N-1 S3		100	-10
10	4	5H	N-1 DA		100	-10
5	15	4H	N 4 H3	620		7
15	5	5H	S-1 S5		100	-10
6	11	4H	N 4 S3	620		7
11	6	4H	S 4 SJ	620		7
8	19	4H	S 4 CJ	620		7
19	8	4H	S 4 D2	620		7
9	13	4H	S 4 ST	620		7
13	9	5H	S-1 D2		100	-10
12	16	3NT	S 6 CJ	690		8
16	12	6NTxN	6 S3	1680		16
14	22	4H	S 4 SJ	620		7
22	14	5H	N-1 SJ		100	-10
18	20	4H	S 4 CJ	620		7
20	18	5H	N-1 C7		100	-10
21	23	5H	N-1 DA		100	-10
23	21	5H	N-1 DA		100	-10

Board (16) Av: NS=-590

N-S	E-W	Contract	L	N-S	E-W	IMP
1	7	4H	E 4 S4		620	-1
7	1	4H	E 4 S9		620	-1
2	24	4H	E 4 ST		620	-1
24	2	4Sx	S-4 S3		800	-5
3	17	4H	E 4 ST		620	-1
17	3	4H	E 4 DJ		620	-1
4	10	4H	E 4 ST		620	-1
10	4	4Sx	S-3 H8		500	3
5	15	4Sx	N-3 H3		500	3
15	5	4H	E 4 ST		620	-1
6	11	4H	E 4 ST		620	-1
11	6	4H	E 4 H3		620	-1
8	19	4H	E 4 ST		620	-1
19	8	4H	E 4 D2		620	-1
9	13	4H	E 4 S9		620	-1
13	9	4H	E 4 S9		620	-1
12	16	4H	W 4 S5		620	-1
16	12	4H	E 4 ST		620	-1
14	22	4H	E 4 S9		620	-1
22	14	4H	E 4 H7		620	-1
18	20	3S	S-2 H8		100	10
20	18	4H	E 4 DJ		620	-1
21	23	4H	E 4 DJ		620	-1
23	21	4H	E-1 ST		100	12

Board (17) Av: NS=+70

N-S	E-W	Contract	L	N-S	E-W	IMP
1	7	2NT	N-1 ST		50	-3
7	1	2NT	N-1 ST		50	-3
2	24	1C	N 1 ST	70		0
24	2	1NT	N-1 ST		50	-3
3	17	1NT	N 1 ST	90		1
17	3	3NT	S-1 H9		50	-3
4	10	2NT	N 2 S9	120		2
10	4	2Dx	W-2 DA	300		6
5	15	2NT	N-1 S9		50	-3
15	5	1NT	N 1 DT	90		1
6	11	1NT	N 1 DT	90		1
11	6	3S	N-2 S4		100	-5
8	19	1NT	N 2 HA	120		2
19	8	1S	E-2 H6	100		1
9	13	3S	E-4 DQ	200		4
13	9	1NT	N 1 HA	90		1
12	16	2D	E-1 D4	50		-1
16	12	2Hx	E-2 H6	300		6
14	22	1NT	W-2 H2	100		1
22	14	2NT	N-1 ST		50	-3
18	20	1NT	N 2 ST	120		2
20	18	1C	N 1 CQ	70		0
21	23	1C	N 1 HA	70		0
23	21	1NT	W-1 H2	50		-1

Board (18) Av: NS=-60

N-S	E-W	Contract	L	N-S	E-W	IMP
1	7	2H	E 2 S6		110	-2
7	1	2H	W 3 DA		140	-2
2	24	2H	E 3 CK		140	-2
24	2	2S	N 2 H4	110		5
3	17	2H	E 2 S6		110	-2
17	3	4H	W-1 SK	50		3
4	10	2H	E 2 CK		110	-2
10	4	3H	E-2 CK	100		4
5	15	3H	E-1 H3	50		3
15	5	3H	E 3 CK		140	-2
6	11	4C	S-3 HK		300	-6
11	6	2S	S 2 H4	110		5
8	19	2H	W 2 H5		110	-2
19	8	2H	E 2 D2		110	-2
9	13	2H	E 3 CK		140	-2
13	9	4Hx	W-1 DK	100		4
12	16	2S	N-1 H4		100	-1
16	12	4H	W-1 DA	50		3
14	22	3H	E 3 S5		140	-2
22	14	3H	E-1 H7	50		3
18	20	2H	E 2 CK		110	-2
20	18	2H	W 3 C2		140	-2
21	23	2H	W 2 C2		110	-2
23	21	2H	W 3 DA		140	-2

19

♠ K1087
 ♥ AJ74
 ♦ AQ
 ♣ KQ10
 ♠ 943
 ♥ 983
 ♦ J
 ♣ A98653
 N
 W — E
 ♠ A652
 ♥
 ♦ 75432
 ♣ J742
 (S)
 ♠ QJ
 ♥ KQ10652
 ♦ K10986
 ♣

20

♠ Q754
 ♥ Q52
 ♦ 109
 ♣ K1094
 ♠ AJ963
 ♥ A
 ♦ K763
 ♣ AJ3
 N
 W — E
 ♠ K2
 ♥ K109864
 ♦ Q5
 ♣ Q82
 S
 ♠ 108
 ♥ J73
 ♦ AJ842
 ♣ 765

Board (19) Av: NS=+610

Board (20) Av: NS=-410

N-S	E-W	Contract	L	N-S	E-W	IMP
1	7	6H	S 7 DJ	1010		9
7	1	6H	S 6 S3	980		9
2	24	5H	S 6 S3	480		-4
24	2	4H	N 6 DJ	480		-4
3	17	4H	S 6 DJ	480		-4
17	3	6H	S 6 S3	980		9
4	10	6H	S 6 DJ	980		9
10	4	6H	S 6 H2	980		9
5	15	7H	N-1 H3		50	-12
15	5	7Hx	S-1 S6		100	-12
6	11	5H	S 6 DJ	480		-4
11	6	4H	S 6 DJ	480		-4
8	19	5H	S 6 DJ	480		-4
19	8	6H	S 6 D2	980		9
9	13	6H	S 6 DJ	980		9
13	9	4H	S 6 DJ	480		-4
12	16	5H	S 6 DJ	480		-4
16	12	6NT	N-1 D7		50	-12
14	22	5H	S 6 DJ	480		-4
22	14	6H	N 6 S3	980		9
18	20	7H	N-1 SA		50	-12
20	18	6H	S 6 DJ	980		9
21	23	6H	S 6 C2	980		9
23	21	5H	S 7 CA	510		-3

N-S	E-W	Contract	L	N-S	E-W	IMP
1	7	3NT	E 3 C7		600	-5
7	1	3NT	E 3 ST		600	-5
2	24	4S	W-1 CK	100		11
24	2	3NT	E 3 C9		600	-5
3	17	4H	E 4 C6		620	-5
17	3	3NT	W 3 C4		600	-5
4	10	3NT	W-1 CT	100		11
10	4	3NT	E-2 H3	200		12
5	15	3NT	E-1 H3	100		11
15	5	4H	W 4 DT		620	-5
6	11	4H	E-1 C5	100		11
11	6	3NT	E-1 ST	100		11
8	19	4H	E 4 C5		620	-5
19	8	3NT	W 3 C9		600	-5
9	13	2H	E 4 C5		170	6
13	9	3NT	W 3 C4		600	-5
12	16	4H	W 4 DT		620	-5
16	12	3NT	E 4 H3		630	-6
14	22	3NT	W 3 C4		600	-5
22	14	3NT	E 3 C4		600	-5
18	20	2H	W 3 C5		140	7
20	18	3NT	W 3 CT		600	-5
21	23	3NT	E 4 C6		630	-6
23	21	4H	E 5 ST		650	-6